

COST ACTION CA18218

3RD WG MEETING

25 January 2022

Online • www.burden-eu.net/WEB2022

brecht.devleesschauwer@sciensano.be

Program

	Monday 24/01	Tuesday 25/01	Wednesday 26/01
13h00	MC meeting	WG meeting: Action updates	WG meeting: Abstract session
14h00			
15h00			
16h00			

13h00 **Welcome & Presentation of COST action CA18218 burden-eu**

— Brecht Devleeschauwer, Action Chair

13h30 **Training schools & Meetings**

— Brecht Devleeschauwer, Action Chair

14h00 **Mobility and dissemination grants**

— Tina Lesnik, Grant Awarding Coordinator

14h15 Coffee break

14h25 **Knowledge translation Working Group**

— Henk Hilderink, WG5 leader

14h50 **COVID-19 disease burden Task Force**

— Sara Pires, WG2 leader

15h15 **Activities and outputs of Working Groups**

— Brecht Devleeschauwer, Action Chair, Juanita Haagsma, WP1 leader & Elena von der Lippe, WG4 leader

15h45 **What's next?**

— Brecht Devleeschauwer, Action Chair

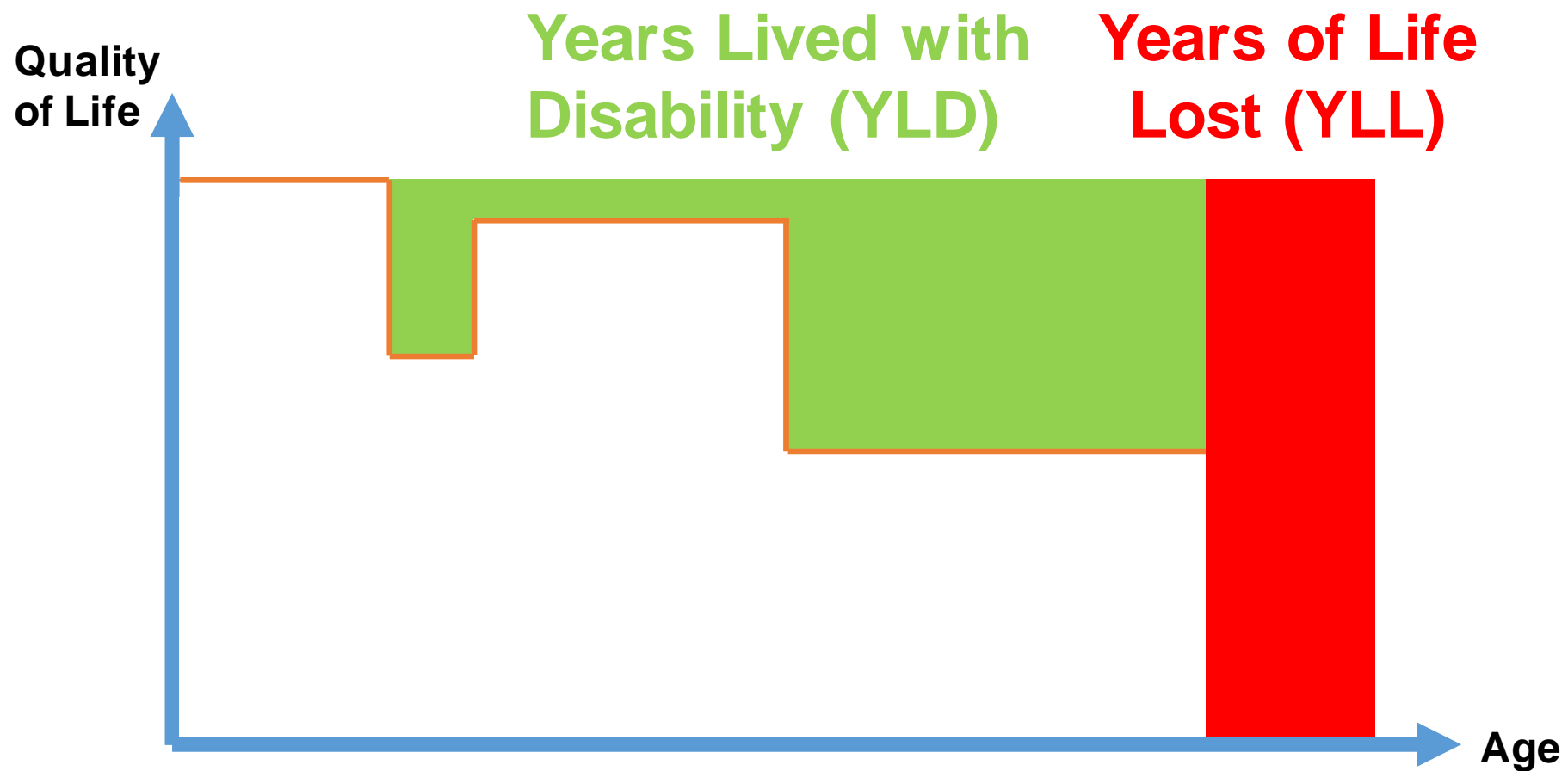
16h00 Closure of Session 1

Burden of disease

- What are the most relevant **diseases** in a country?
- Which **risk factors** are the strongest contributors to disease and death?
- How is the impact of different diseases evolving **over time**?
- How does it compare **between and within countries**?



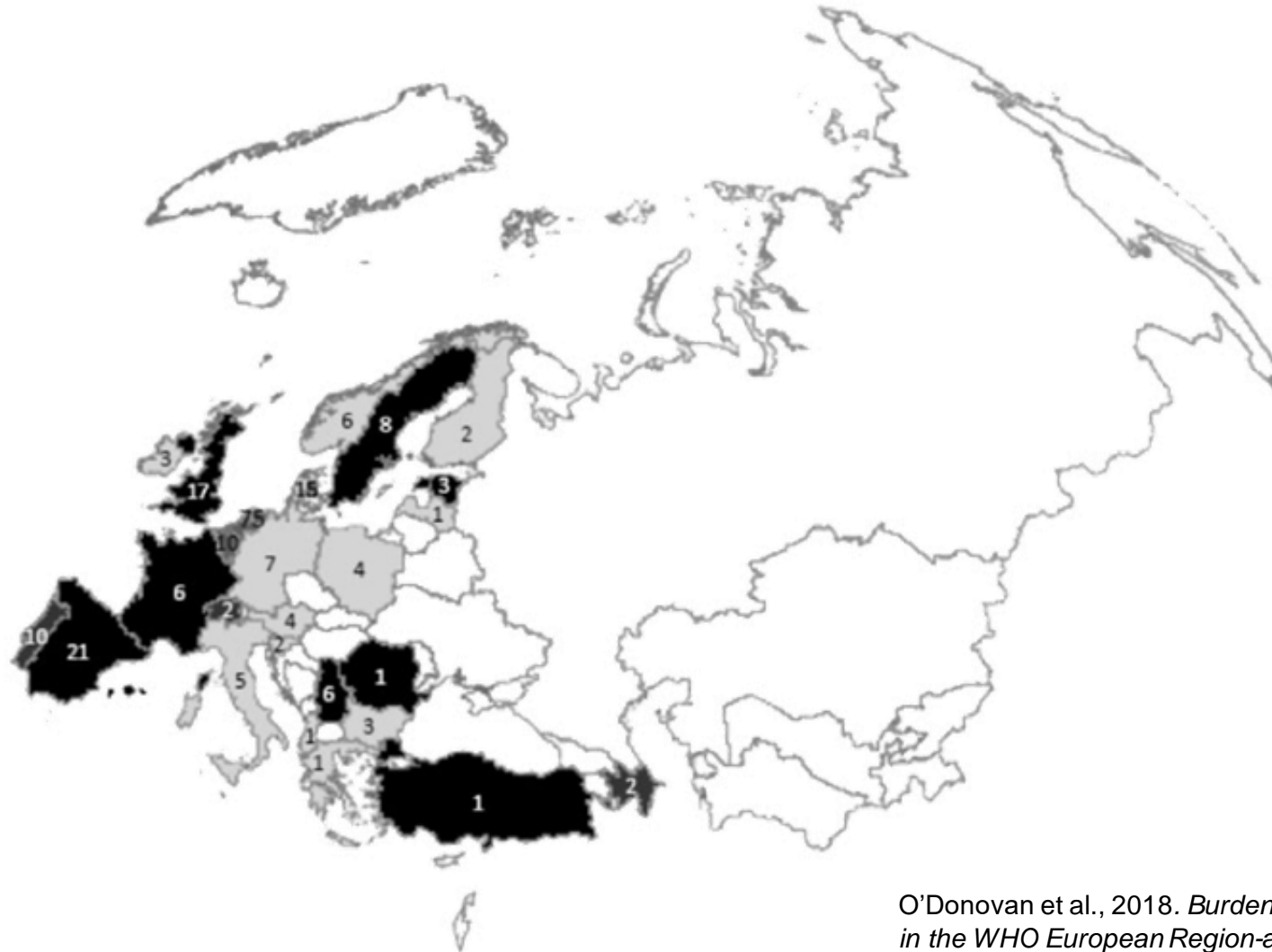
Disability-Adjusted Life Years



Global Burden of Disease



BoD activities in Europe



O'Donovan et al., 2018. *Burden of disease studies in the WHO European Region-a mapping exercise.*

BoD activities in Europe



Objectives

BOD plays an increasingly important role in PH decision making

↔ variable technical capacity at country level

↔ limited harmonization of existing efforts

↔ no platform to support methodological advances

↔ limited understanding of knowledge translation/policy transfer

burden-eu objective

- **Technical platform for integrating and strengthening capacity in burden of disease assessment across Europe and beyond**

Objectives

Research Coordination

- **Bring together** experts and expertise across different domains, transforming the currently scattered burden of disease landscape into one transnational team
- **Compare and harmonize methods** and approaches for burden of disease assessment
- Identify critical **knowledge and data gaps**, and set up studies for which international coordination is needed
- Serve as an **advocacy group** for the burden of disease approach in Europe

Objectives

Capacity Building

- **Build and increase capacity** in burden of disease assessment across Europe
- Serve as a **technical platform** where knowledge and expertise can be shared among established and emerging researchers
- Promote an interdisciplinary approach that **integrates knowledge translation** in the classical burden of disease framework



COST Action CA18218 European Burden of Disease Network



*Technical platform to integrate and strengthen capacity in
burden of disease assessment across Europe and beyond*

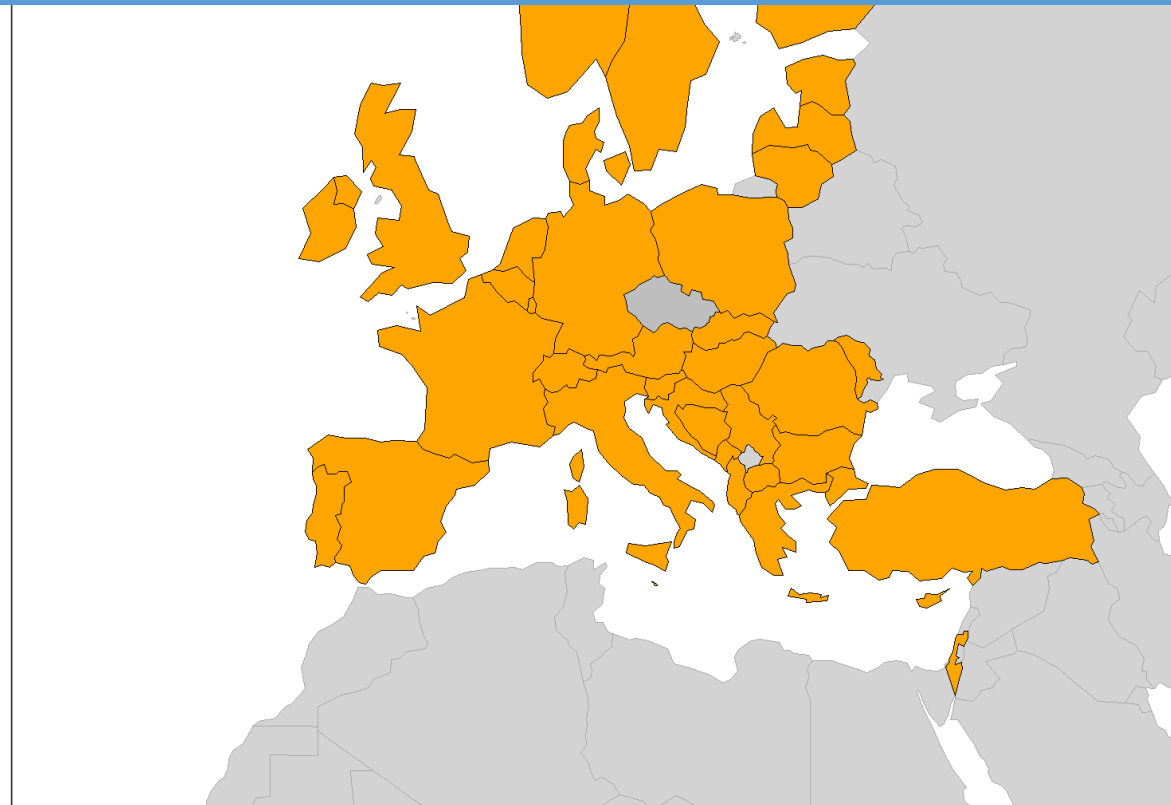
www.burden-eu.net

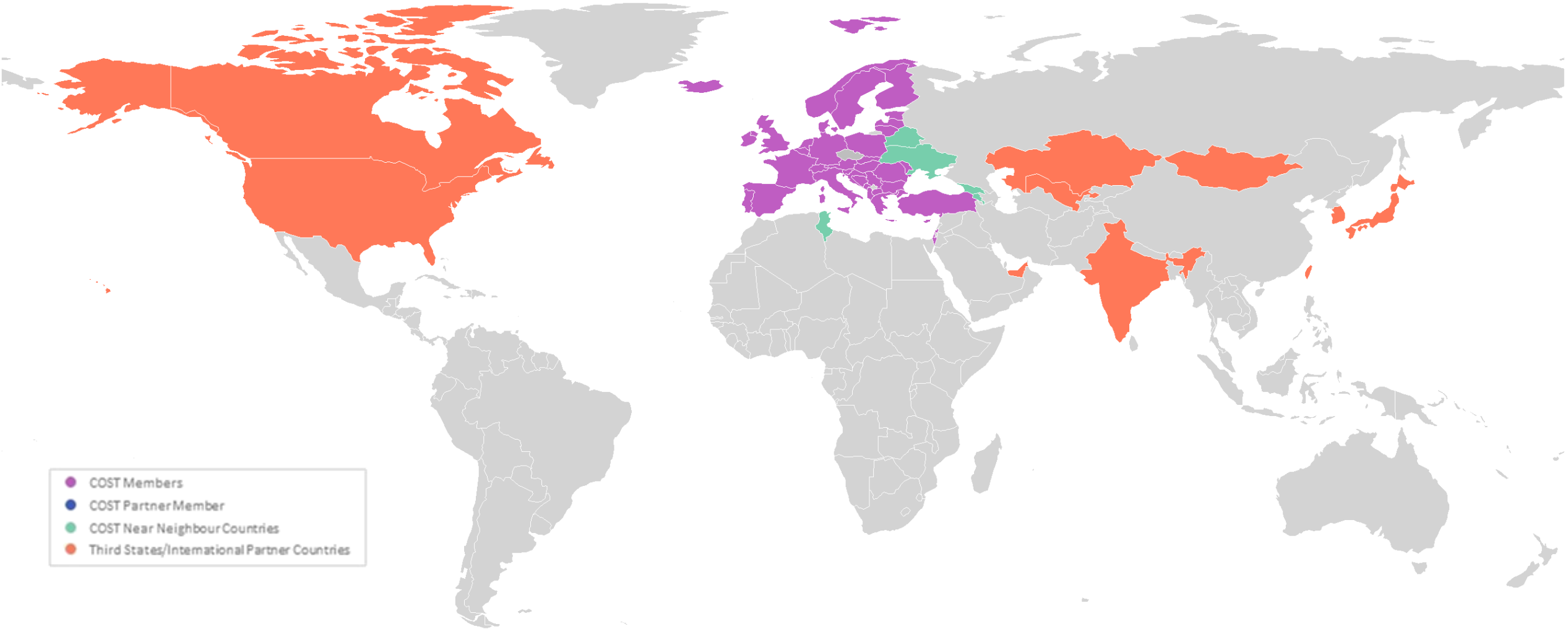




308 members

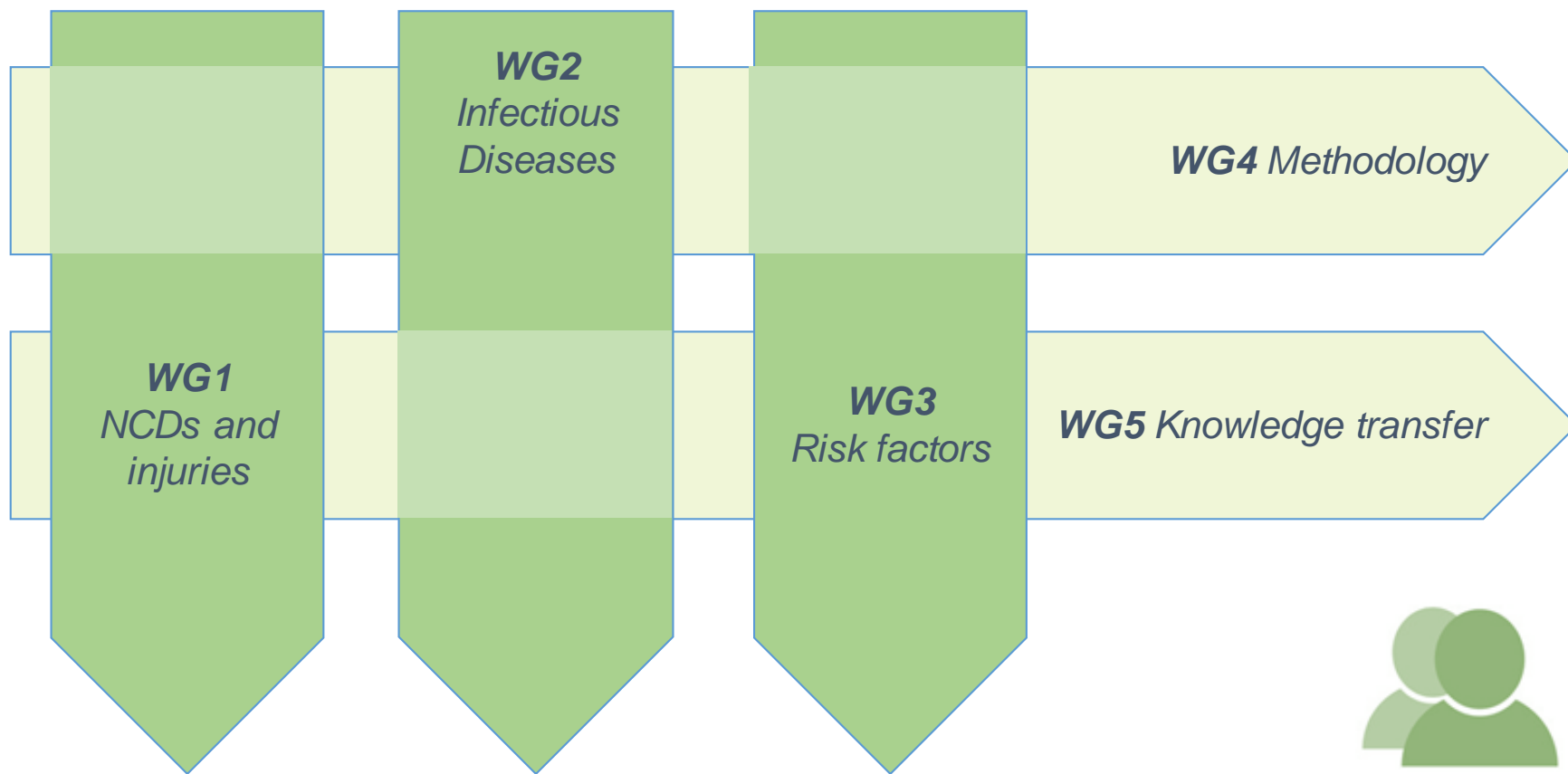
38 countries





- COST Members
- COST Partner Member
- COST Near Neighbour Countries
- Third States/International Partner Countries

Working groups



Grant Awarding Coordinator
Science Communication Manager

Core group

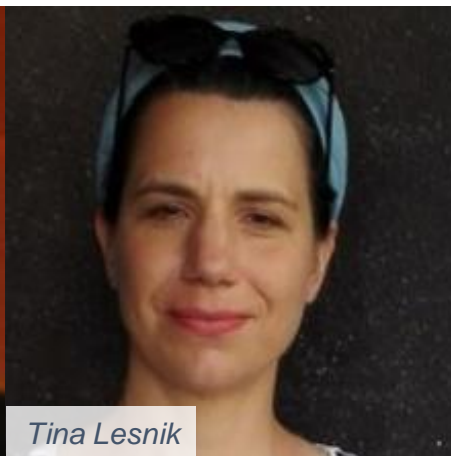
**Action
Chair**



**Action
Vice-Chair**



**Grant Awarding
Coordinator**



**Sci Com
Manager**



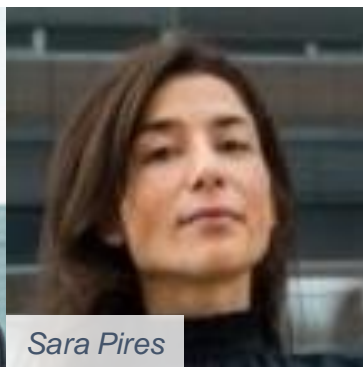
Core group

WG1
NCDs & Injuries



Juanita Haagsma

WG2
Infectious disease



Sara Pires

WG3
Risk factors



Dietrich Plass

WG4
Methodology



Elena von der Lippe

WG5
Knowledge transfer



Henk Hilderink



Marek Majdan



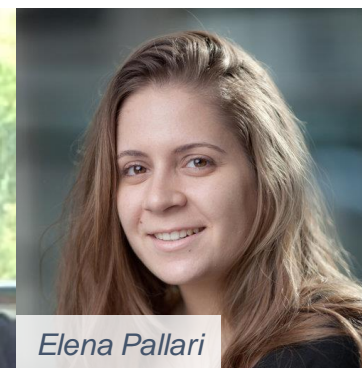
Ricardo Assunção



Jane Idavain

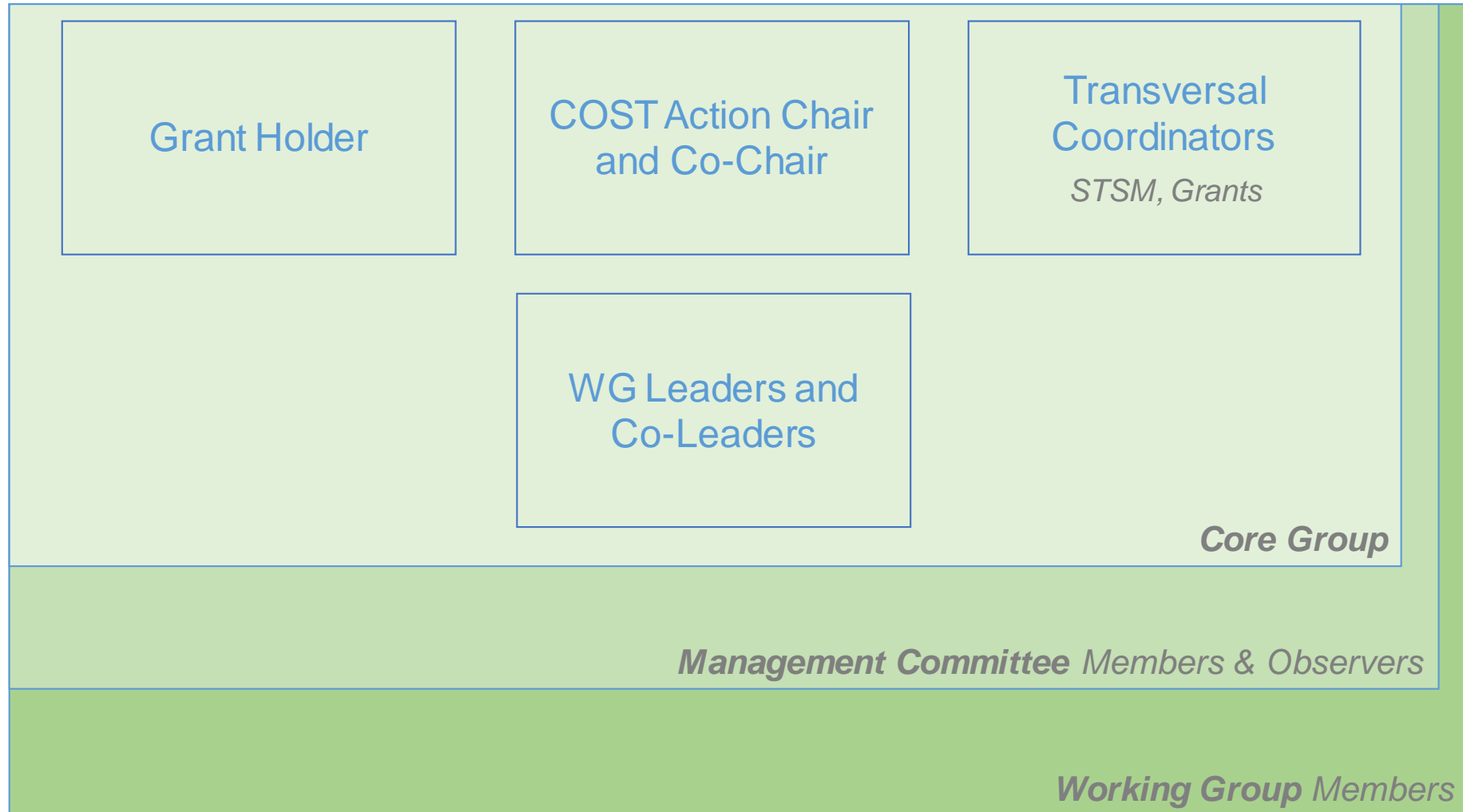


Ian Grant



Elena Pallari

Structure



New Working Group management tool

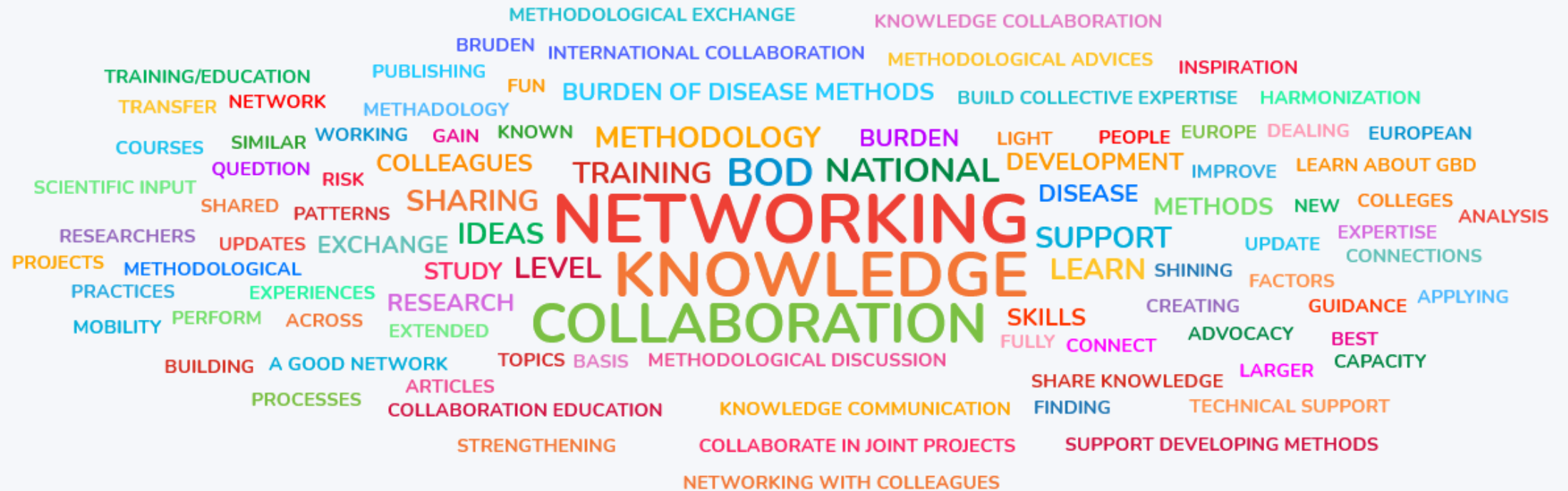
- A **new tool** has been developed for applying to become a WG member: <https://e-services.cost.eu/action/CA18218/working-groups/apply>
- WG members are now also listed on the **COST website**
- The tool makes it easier for NNC/IPC affiliates to join
- This information will now also be used to **estimate the size** of the network, contributing to the determination of the budget for the following Grant Period
- **Please make sure to formally apply as WG member**

How to participate?



- 1 Connect to www.wooclap.com/BURDEN
- 2 You can participate

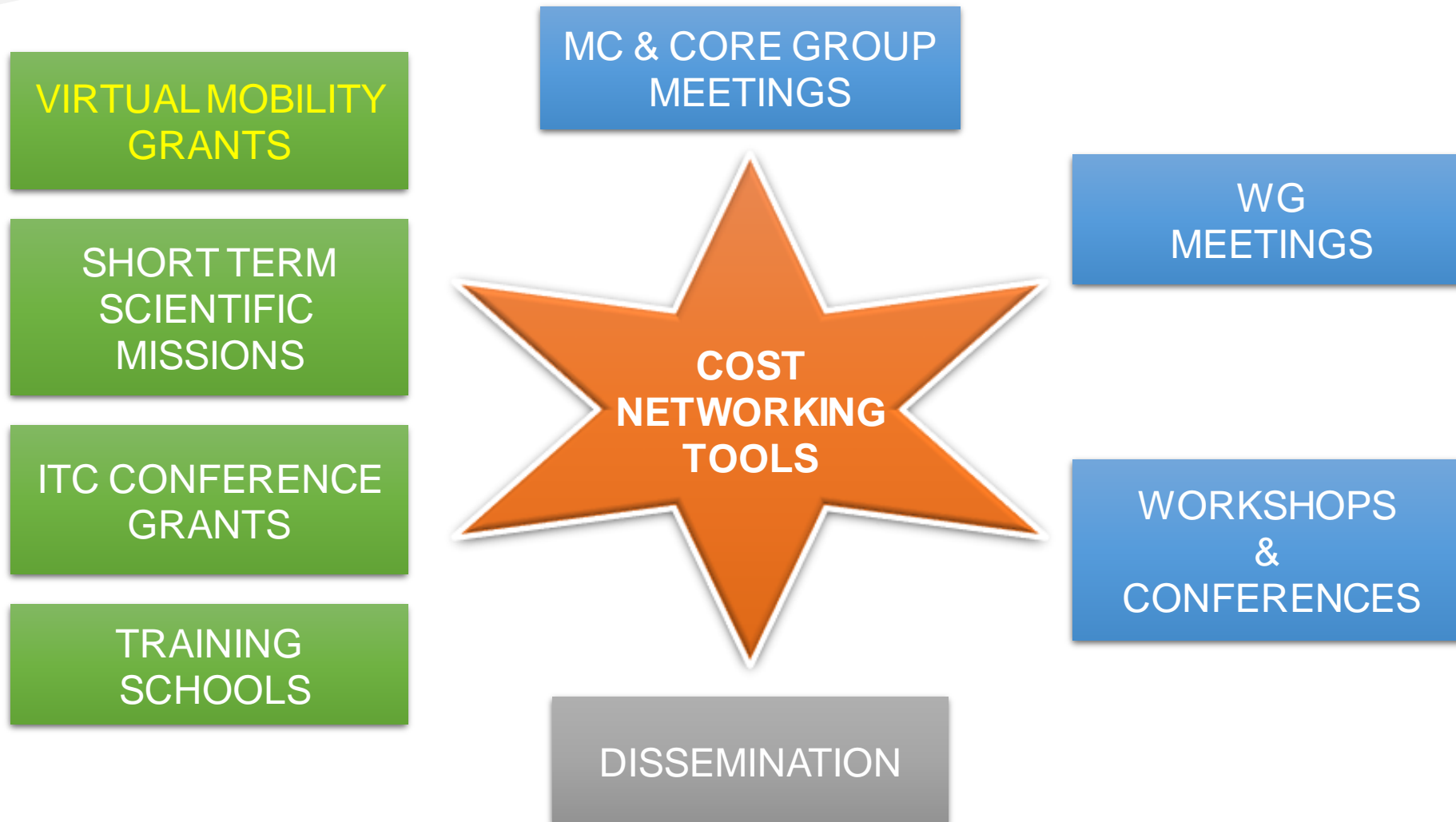
What do you expect from our COST Action?



How could we improve our COST Action to better suit your needs?

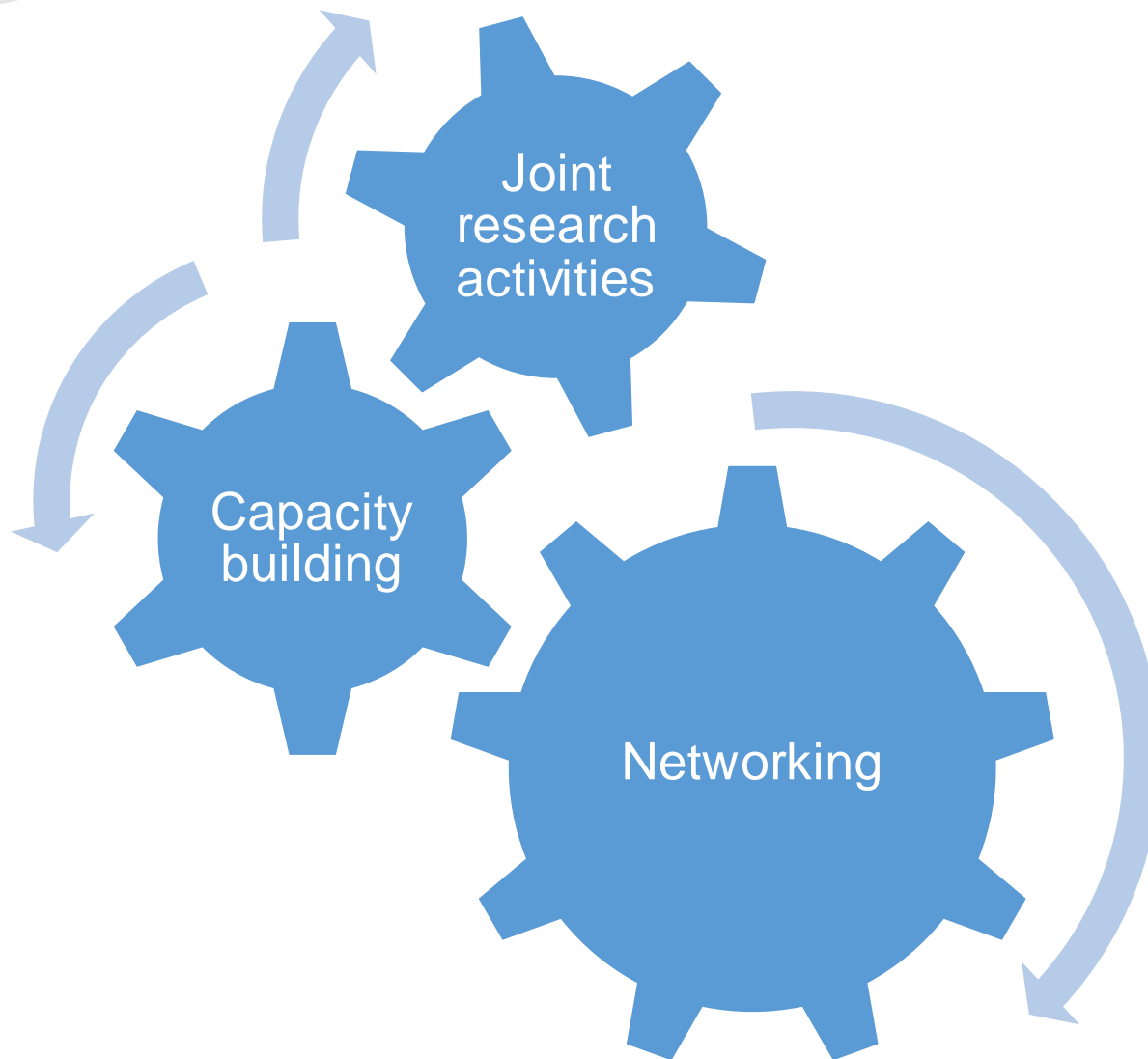


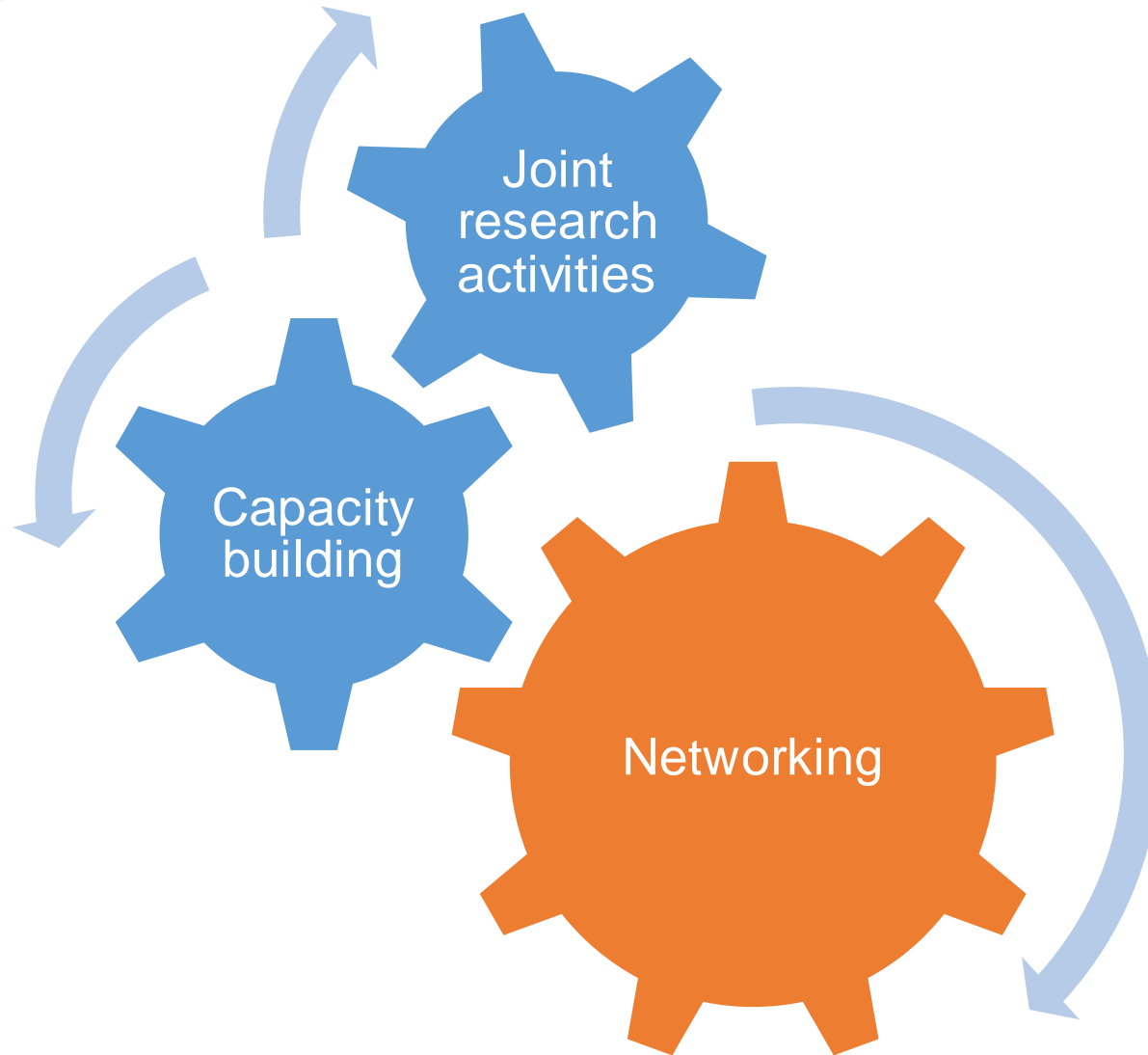
COST Networking Tools



COST Policies









evleeschauwer (Host)

Brec... (Host)





**International Burden of Disease Conference
June 2022
Belgrade, Serbia**

#WCPH2020 Workshop

National burden studies: inspirat experiences from globe

Tue 13/10, 14h45-15h45 CET
More via www.burden-eu.net

COST Action CA18218
European Burden of Disease

europ
burden-eu
of disease
network




Juanita Haagsma
AV POD

Data inputs and assumptions in calculating the non-fatal burden in burden of disease studies

Juanita Haagsma, Erasmus MC, Rotterdam, Netherlands
Ian Grant, Public Health Scotland, Edinburgh, Scotland
Brecht Devleesschauwer, Sciensano, Brussels, Belgium

ase: of



cost
EUROPEAN COOPERATION
IN SCIENCE & TECHNOLOGY

#WCPH2020 Workshop

Deconstructing step by step gui calculating YLL

Fri 16/10, 19h45-20h45 CET
More via www.burden-eu.net

COST Action CA18218
European Burden of Disease

europ
burden-eu
of disease
network



Elena von der Lippe
AV POD

Data inputs and assumptions in calculating the fatal burden in burden of disease studies

Elena von der Lippe, Robert Koch Institute, Berlin, Germany
Ian Grant, Public Health Scotland, Edinburgh, Scotland
Brecht Devleesschauwer, Sciensano, Brussels, Belgium

ase the



cost
EUROPEAN COOPERATION
IN SCIENCE & TECHNOLOGY

<https://www.burden-eu.net/eph2021>

Health, risk factors and inequalities in the EU: Insights from the Global Burden of Disease study



Later bekij... Delen


Infographics as a tool for knowledge translation



National Institute for Public Health


Later bekij... Delen

Knowledge Translation and Burden of Disease, from theory to practice




Later bekij... Delen

Methodological choices in burden of disease studies: a literature review of European studies



Later bekij... Delen


Burden of disease of COVID-19: strengthening the collaboration for national studies




Later bekij... Delen

WORKSHOP: BURDEN OF DISEASE OF COVID-19: STRENGTHENING THE COLLABORATION FOR NATIONAL STUDIES

European Public Health Conference, 10-12th November 2021



cost
EUROPEAN COOPERATION
IN SCIENCE & TECHNOLOGY



COST is supported by the
EU framework programme
Horizon 2020

MEER VIDEO'S

0:21 / 55:34

YouTube

MEER VIDEO'S

0:24 / 52:11

Bekijken op YouTube

MEER VIDEO'S

0:02 / 59:02

MEER VIDEO'S

0:25 / 58:21

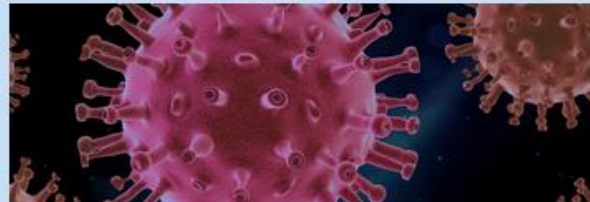
The burden-eu COST Action wants to put its members in the spotlight! Spotlights are short (500-1000 words) blogposts where network members present their work in a personal and vulgarizing way. The spotlights also describe how the presented work benefited from the COST Action.

Do you have a recent publication or new project related to burden of disease? Please let us know via info@burden-eu.net, and we will be happy to put you in the spotlight!

Santé Publique France - National burden of disease study for France



Alexander Rommel - BoCO-19: Towards a harmonization of population health metrics for the surveillance of dynamic outbreaks



Lea Sletting Jakobsen - Impact of dairy consumption in the Danish population



Sarah Cuschieri - Experiences of the network from Malta



Aline Anton - Estimating headache prevalence and severity in Germany



Zubair Kabir - Development of a Global Burden of Disease-Frailty Index

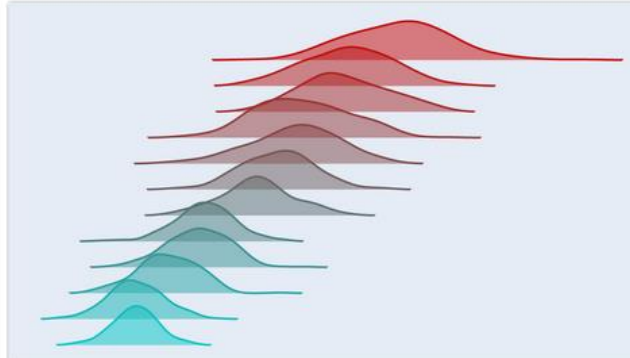




[Webinar] Measuring the burden of rare diseases

Tuesday 14 September 2021, 9h-10h30 CET

Read more:



[Webinar] Forecasting the Global Burden of Disease Study

Tuesday 29 June 2021, 16h-17h CET

Read more:



[Webinar] Burden of disease assessment for COVID-19: initial insights and future perspectives

Friday 21 May 2021, 14h-15h CET

Read more:

www.burden-eu.net/webinars



[Webinar] Activities and achievements of the Italian GBD Initiative

Thursday 29 April 2021, 13h-14h CET

Read more:



[Webinar] Elicitation and practical use of disability weights for quantifying years lived with disability

Thursday 14 January 2021, 13h-14h CET

Read more:



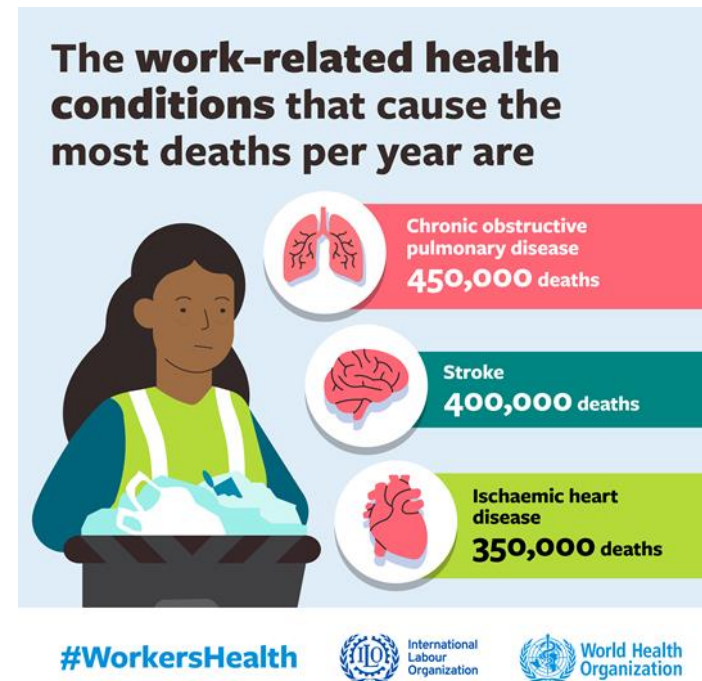
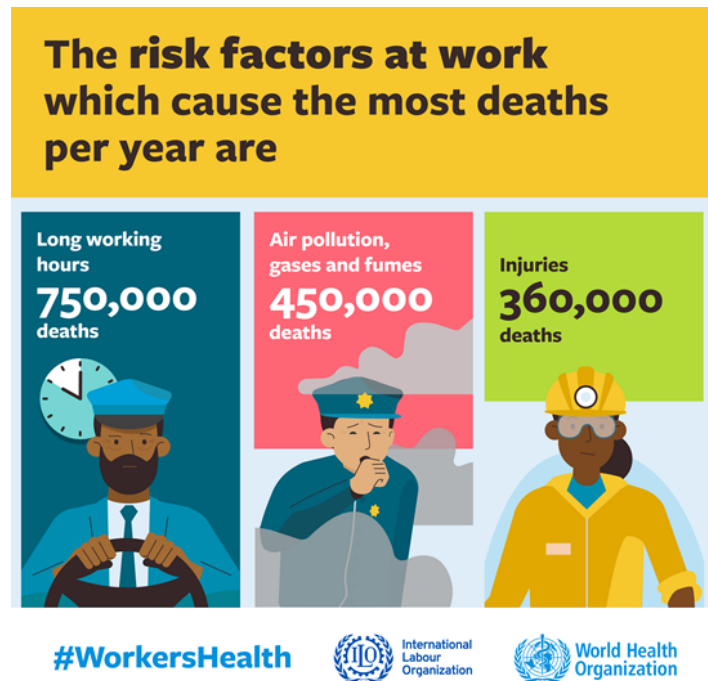
[Webinar] Quantifying COVID-19 disease burden

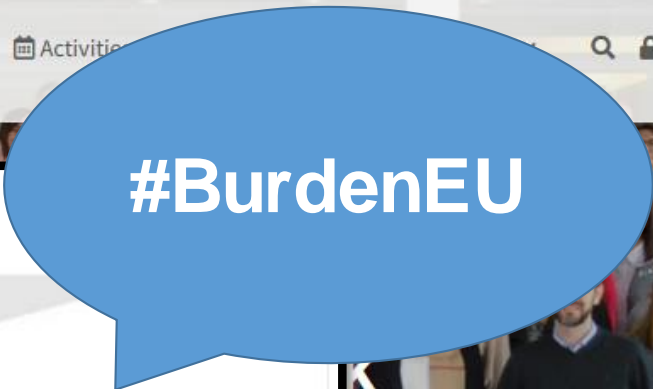
Friday 20 November 2020, 11h-12h CET

Read more:




Next webinar

- Monday 14 March, 13h CET
- WHO/ILO estimates global burden of occupational disease







BurdenEU
381 Tweets



BurdenEU
@BurdenEU Volgt jou

Technical platform for integrating and strengthening capacity in #BurdenOfDisease assessment across Europe and beyond |  | #BurdenEU @COSTprogramme CA18218

[Bio vertalen](#)

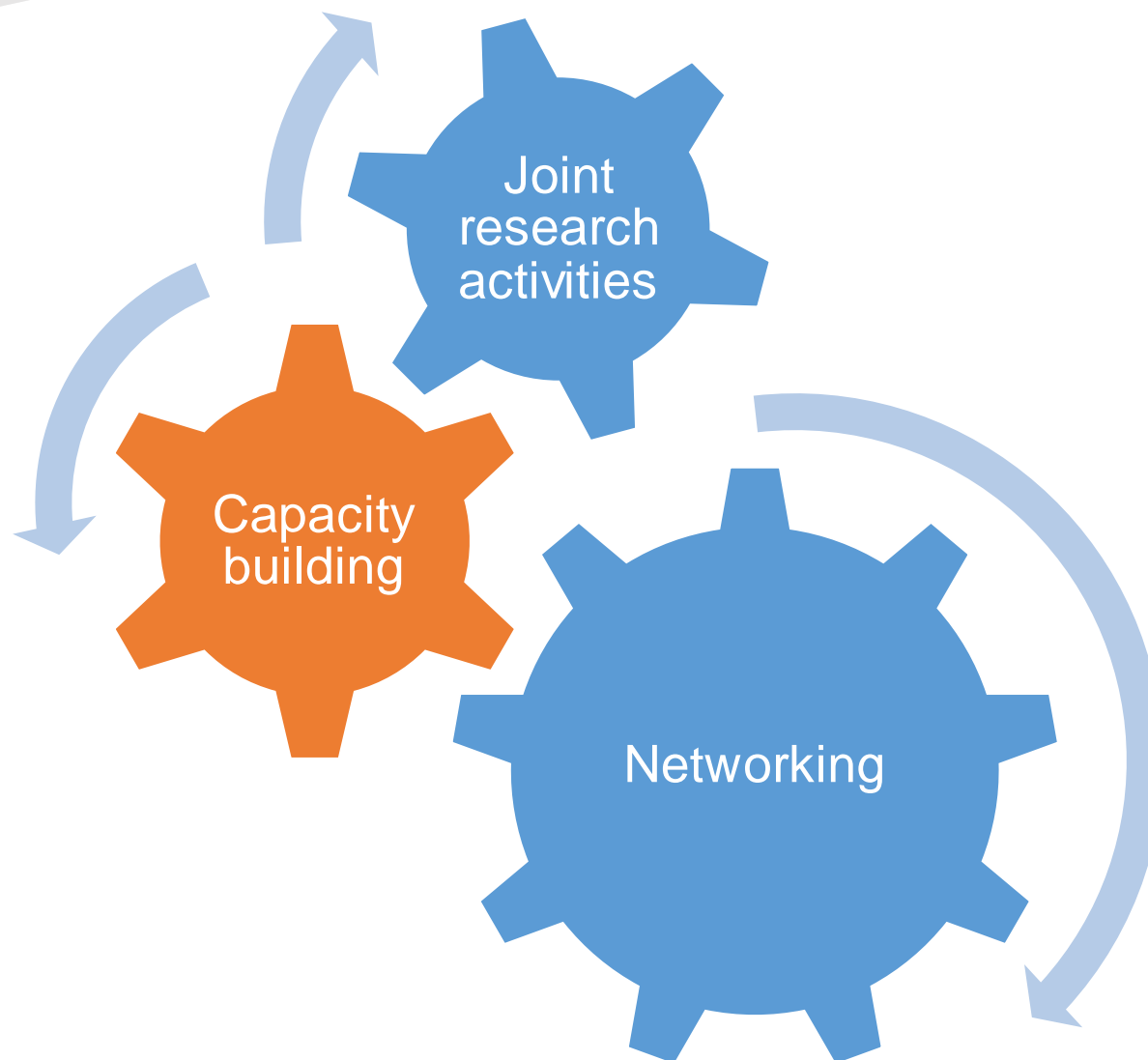
burden-eu.net  Lid geworden in juni 2019

283 Volgend **235** Volgers

  Gevolgd door unCover, PHIRI en 104 anderen die jij volgt

15
October 2021

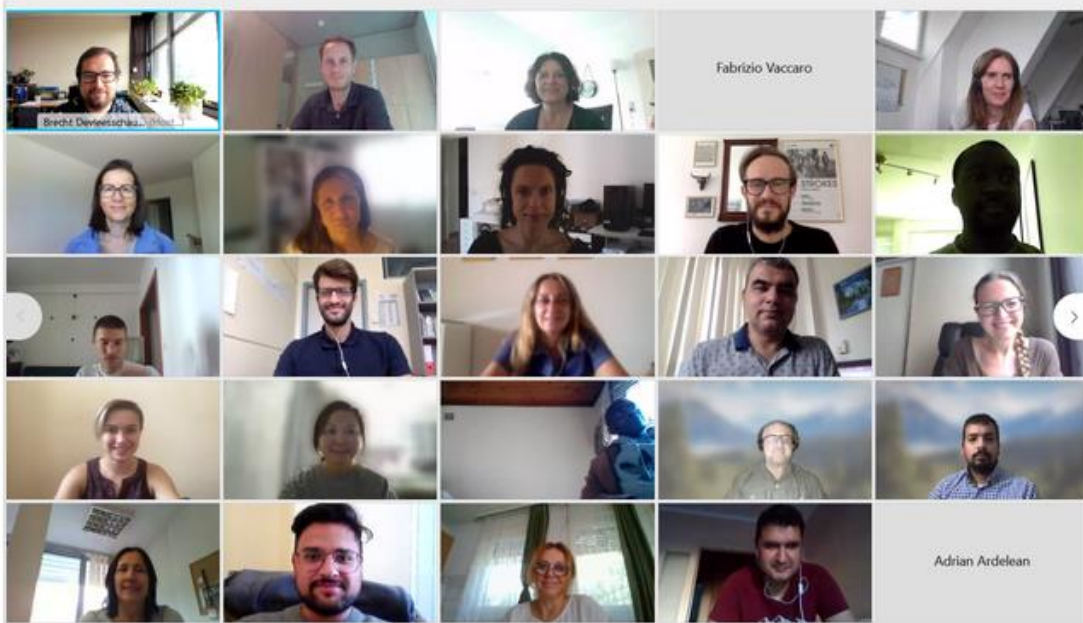
Launch of the Knowledge Translation workshops
Compiling good practices in knowledge translation.





Training Schools

Individual mobility

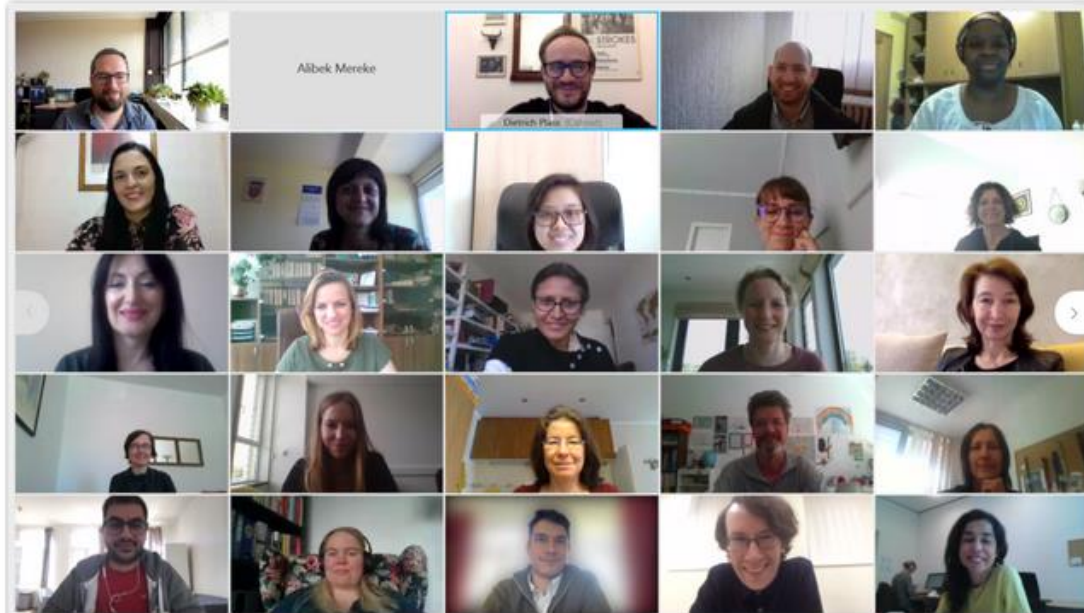


[Training School] General concepts of burden of disease - 2nd edition

Introduction to the calculation and use of DALYs

📅 September 2021

[Read more:](#)



[Training School] General concepts of burden of disease - 1st edition

Introduction to the calculation and use of DALYs

📅 May-June 2021

[Read more:](#)

Testimonials

https://www.youtube.com/watch?v=rw7y_c_HTyU



TRAINING SCHOOL

COVID-19 Burden of Disease

30.03 - 01.04, Ljubljana (SI)



european
burden-eu
of disease
network



PHIRI

Population Health Information
Research Infrastructure

Registrations are open: [apply before 31 January 2022 by completing the registration form.](#)

Program

Time (CET)	Module 1 Wednesday 30/03	Module 2 Thursday 31/03	Module 3 Friday 01/04
9h30	Welcome & introductions	Welcome & wrapup of previous session	Welcome & wrapup of previous session
10h00	Introduction to DALYs: historical and technical basis	Disability weights: theory and applications	From theory to practice: data, assumptions, uncertainties
11h00	Exercise	Exercise	Exercise
12h00	Discussion	Discussion	Discussion
12h15	Lunch break	Lunch break	Lunch break
13h00	Calculating Years of Life Lost	Calculating Years Lived with Disability	Knowledge translation
14h00	Exercise	Exercise	Exercise
14h45	Q&A	Q&A	Q&A
15h00	Closure of module 1	Closure of module 2	Closure of module 3

How to participate?



- 1 Connect to www.wooclap.com/BURDEN
- 2 You can participate

Which Training School should we develop next?



Which risk factors would you like to see addressed in a risk factors Training School?



Individual mobility

Tina Lesnik

Testimonials

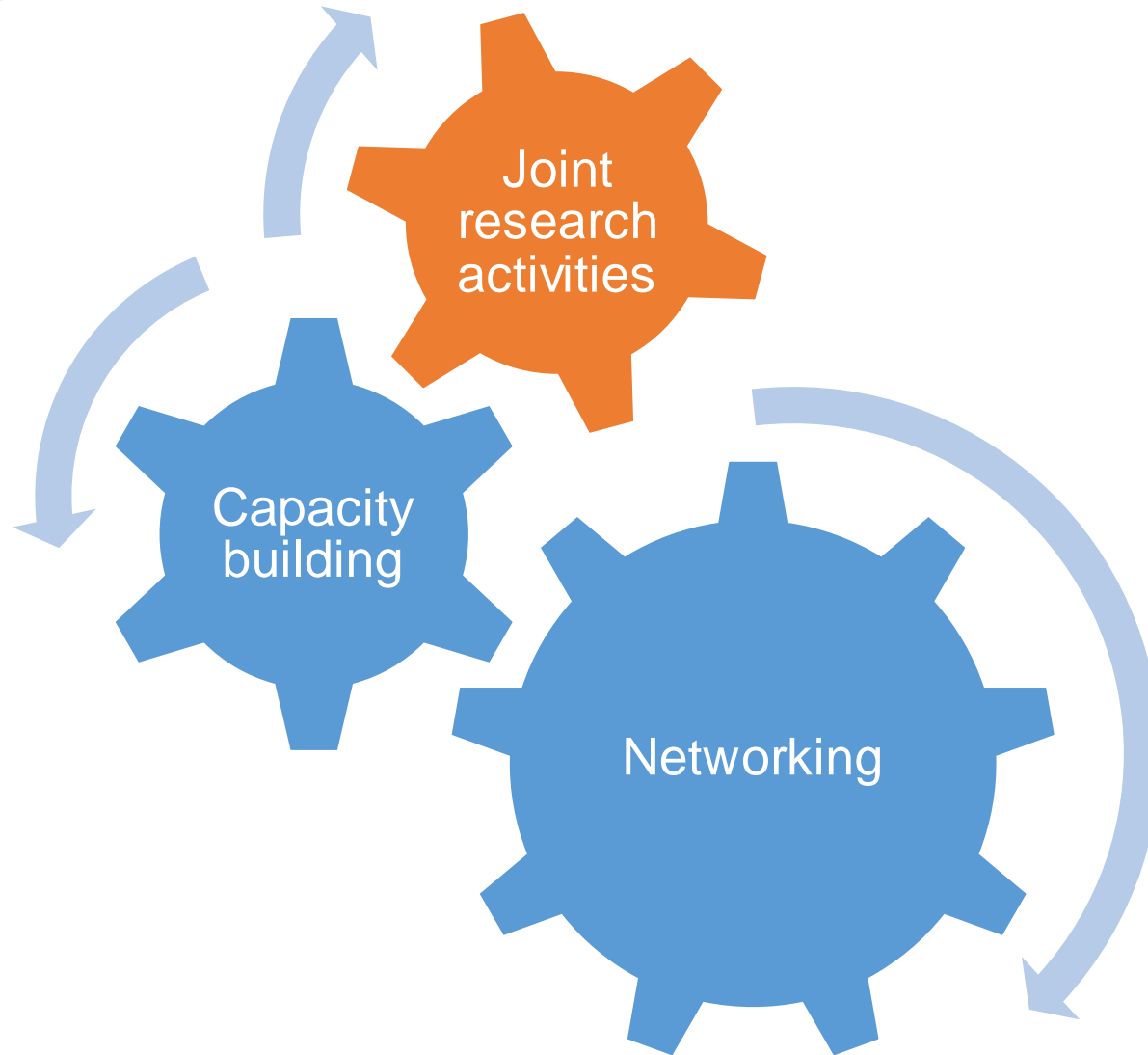
<https://www.youtube.com/watch?v=Et2ggqVnpmvE>



Coffee break

We start again at 14h25 CET





Knowledge translation Working Group

Henk Hilderink

COVID-19 disease burden Task Force

Sara Pires

There are currently **344** records in the European Burden of Disease database.

shortcuts for the filters: next option: ↓ or → | previous option: ↑ or ← | next filter: TAB | previous filter: SHIFT + TAB

Live search All Topics All Countries

Sort by date ↓ Sort by date ↑ Sort by title ↓ Sort by title ↑

<https://www.burden-eu.net/outputs/bod-database>

Year	Finland	Sweden	Denmark	Norway
2010	2.5	2.4	4.8	2.8
2012	2.5	2.4	4.5	2.7
2014	2.5	2.4	4.2	2.6
2016	2.6	2.4	4.0	2.5

of Disease, Injury and Risk Factor 2017 study

Agardh EE, Allebeck P, Flodin P, Wennberg P, Ramstedt M, Knudsen AK, Øverland S, Kinge JM, Tollånes MC, Eikemo TA, Skogen JC, Mäkelä P, Gissler M, Juel K, Moesgaard Iburg K, McGrath JJ, Naghavi M, Vollset SE, Gakidou E, Danielsson A

Drug and Alcohol Review. 2021; 40: 431-442

Risk factors Sweden Finland Denmark Norway

doi

Burden of disease from exposure to secondhand smoke in children in Europe

Category: Research Article

7



Measuring disability-adjusted life years (DALYs) due to low back pain in Malta

Cuschieri S, Wyper GMA, Calleja N, Gorasso V, Devleesschauwer B

Arch Public Health. 2020;78:68



Recommendations to plan a national burden of disease study

Haneef R, Schmidt J, Gallay A, Devleesschauwer B, Grant I, Rommel A, Wyper GMA, van Oyen H, Hilderink H, Ziese T, Newton J

Arch Public Health. 2021;79:126



Burden of non-communicable diseases in Cyprus, 1990–2017: findings from the Global Burden of Disease 2017 study

Charalampous P, Pallari E, Tyrovolas S, Middleton N, Economou M, Devleesschauwer B, Haagsma JA

Arch Public Health. 2021;79:138



Population vulnerability to COVID-19 in Europe: a burden of disease analysis

Wyper GM, Assunção RM, Cuschieri S, Devleeschauwer B, Fletcher E, Haagsma JA, Hilderink H, Idavain J, Lesnik T, Von der Lippe E, Majdan M, Santric-Milicevic M, Pallari E, Peñalvo JL, Pires SM, Plass D, Santos JV, Stockton DL, Thomsen ST, Grant I

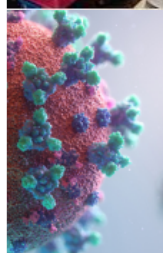
Arch Public Health. 2020;78:47



Burden of foodborne diseases: think global, act local

Pires SM, Desta BN, Mughini-Gras L, Mmbaga BT, Fayemi OE, Salvador EM, Gobena T, Majowicz SE, Hald TM, Hoejskov PS, Minato Y, Devleesschauwer B

Curr Opin Food Sci. 2021;39:152-159



Estimating the direct Covid-19 disability-adjusted life years impact on the Malta population for the first full year

Cuschieri S, Calleja N, Devleesschauwer B, Wyper GMA

BMC Public Health. 2021;;21:1827



Health expectancies in the European Union: same concept, different methods, different results

Santos JV, Viana J, Devleesschauwer B, Haagsma J, Costa-Santos C, Ricciardi W, Freitas A

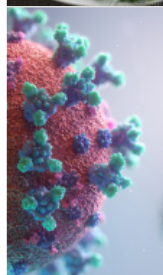
J Epidemiol Community Health. 2021;75:764-771



Risk factors and their contribution to population health in the European Union (EU-28) countries in 2007 and 2017

Santos JV, Gorasso V, Souza J, Wyper GMA, Grant I, Pinheiro V, Viana J, Ricciardi W, Haagsma JA, Devleesschauwer B, Plass D, Freitas A

Eur J Public Health. 2021; in press



Valuing the years of life lost due to COVID-19: the differences and pitfalls.

Devleesschauwer B, McDonald S, Speybroeck N, Wyper GMA

Int J Public Health. 2020;65:719-720



Reflections on key methodological decisions in national burden of disease assessments

von der Lippe E, Devleesschauwer B, Gourley M, Haagsma J, Hilderink H, Porst M, Wengler A, Wyper G, Grant I

Arch Public Health. 2020;78:137



The increasing significance of disease severity in a burden of disease framework

Wyper G, Assunção R, Fletcher E, Gourley M, Grant I, Haagsma J, Hilderink H, Idavain J, Lesnik T, von der Lippe E, Majdan M, McCartney G, Pallari E, Pires S, Plass D, Porst M, Santos J, Santric-Milicevic M, de Haro Moro MT, Stockton D, Devleesschauwer B

Scand J Public Health. 2021; in press



Burden of disease methods: a guide to calculate COVID-19 disability-adjusted life years

Wyper GMA, Assunção RMA, Colzani E, Grant I, Haagsma JA, Lagerweij G, Von der Lippe E, McDonald SA, Pires SM, Porst M, Speybroeck N, Devleesschauwer B

Int J Public Health. 2021;66:619011



Conducting national burden of disease studies in small countries in Europe– a feasible challenge?

Cuschieri S, Pallari E, Terzic N, Alkerwi A, Sigurvinsdottir R, Sigfusdottir ID, Devleesschauwer B

Arch Public Health. 2021;79:73



European burden of disease network: strengthening the collaboration

Devleesschauwer B

Eur J Public Health. 2020;30:2-3



ACCEPTED MANUSCRIPT

Burden of non-communicable disease studies in Europe: a systematic review of data sources and methodological choices

Periklis Charalampous , Vanessa Gorasso, Dietrich Plass, Sara M Pires, Elena von der Lippe, Alibek Mereke, Jane Idavain, Katarzyna Kissimova-Skarbek, Joana Nazaré Morgado, Che Henry Ngwa, Isabel Noguer, Alicia Padron-Monedero, María José Santi-Cano, Rodrigo Sarmiento, Brecht Devleesschauwer, Juanita A Haagsma, The COST Action CA18218 participants

Author Notes

European Journal of Public Health, ckab218, <https://doi.org/10.1093/eurpub/ckab218>

Published: 07 January 2022

Systematic literature review GBD publications

Juanita Haagsma

DALY calculation checklist

Elena von der Lippe

What is next?

Brecht Devleesschauwer

Do not forget..

- Register as WG member → www.burden-eu.net/join
- Training Schools
- Mobility Grants
- Webinars

- **Use the network to your advantage!**

- 13h00 **Welcome**
— Brecht Devleesschauwer, Action Chair, Sciensano, Belgium
- 13h15 **Estimating the direct Disability-Adjusted Life Years (DALYs) associated with SARS-CoV-2 (COVID-19) in the Republic of Ireland: The first full year**
— Declan Moran, University College Cork, Ireland
- 13h30 **BoCO-19: The Burden of Disease due to COVID-19. Towards a harmonization of population health metrics for the surveillance of dynamic outbreaks**
— Caoimhe Cawley, Robert Koch Institute, Germany
- 13h45 **The non-fatal burden of cancer in Belgium, 2004–2019**
— Vanessa Gorasso, Sciensano, Belgium
- 14h00 **Assessing the burden due to non-communicable diseases and injuries: collation of data input sources**
— Periklis Charalampous, Erasmus Medical Centre, Netherlands
- 14h15 Coffee break
- 14h25 **Differences between the registered and expected mortality in Serbia in 2020**
— Aleksandar Stevanovic, University of Belgrade, Serbia
- 14h40 **Ill-defined deaths by age and sex in Belgrade population, 2016-2020**
— Natasa Rosic, Institute of Public Health of the City of Belgrade, Serbia
- 14h55 **Temporal variation in the burden of ambient air pollution in Italy: an analysis from the Global Burden of Disease Study 1990-2019**
— Sara Conti, Università degli Studi di Milano-Bicocca, Italy
- 15h10 **Assessing the environmental burden of disease due to road traffic noise in Hesse, Germany**
— Matthias Lochman, Hessian Agency for Nature Conservation, Environment and Geology, Germany

COST ACTION CA18218

3RD WG MEETING

25 January 2022

Online • www.burden-eu.net/WEB2022

brecht.devleesschauwer@sciensano.be